



boundary.io
INTERACTIVE MEDIA

Services / Projects

prepared for:

Samples Document

prepared by:

ronan@boundary.io

created on:

14.02.2017



We create interactive software that brings digital displays to life

Ronan | Creative Director





Interactive Media Displays
For exhibitions & visitor spaces



Touchscreen Applications
For visitor centers & exhibitions



Application Design
For retail & industry



Marketing Touchscreens
For presentation & sales



Education Interactives
For discovery & learning



App Development
For mobile & web



Digital Interactives

Exhibition | Visitor Spaces



- Interactives for Exhibitions & Visitor Centres
- Interactive Software for Public Spaces (Hospitals / Malls)
- Magic Mirror (Motion-Controlled Interactives)
- Education Interactives

 Fun | Play | Engagement





Touchscreen Software

Visitor Centres | Education



- Touch Screen Interactives
- Interactives for Education
- Game Design
- Touchscreen Apps

 Learn | Discover | Investigate



Marketing | Showrooms | Property

Touchscreens | Presentations

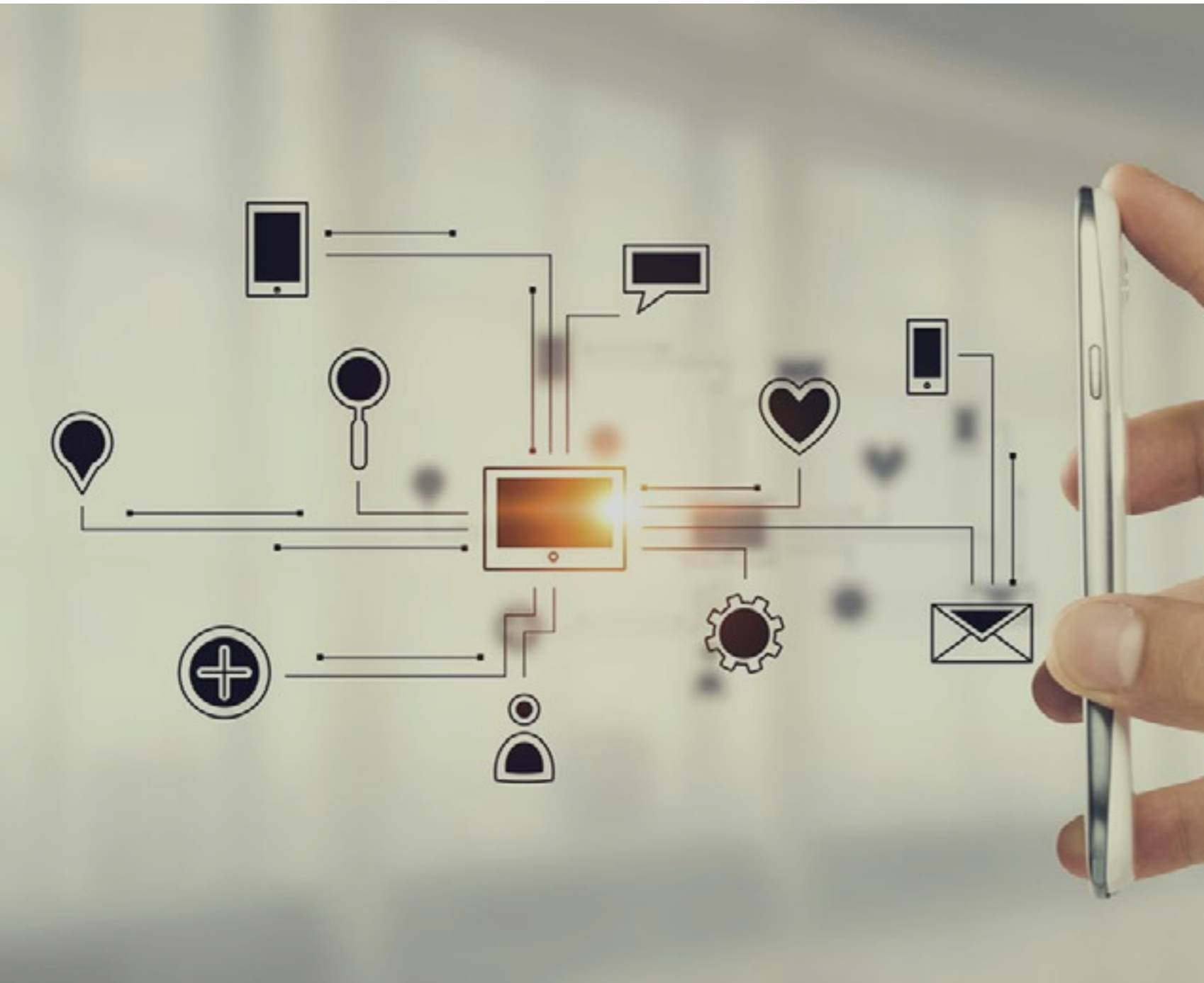


- Touchscreen Display Applications
- Touchscreen Presentations
- Property Information Applications
- Marketing Engagement Tools



Engage | Inform | Advantage | Sales





App & Application Design

Retail | Industry | Mobile



- Retail Touchscreens
- Industry Touchscreens
- User Interface Design
- Mobile Application Design



User Experience | Engage | Enhance

If a picture is worth 1000 words, a prototype is worth 1000 meetings

IDEO



Skills & Experience



Interactive Media Design



Software Design & Development



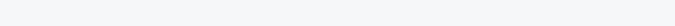
Application Prototyping



User Interface Design



User Experience Design



Design, Animation & Illustration



Project Management



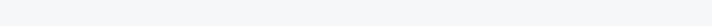
Interpreting a Brief



Working to Budget



Client Communication



Interactive Examples



Virtual Aquarium

Southern General Hospital

An interactive 3D aquarium designed to present a calming, ever changing, engaging play thing to short and long-term hospital visitors. The aquarium has varied fish types which react differently to user touch, like a puffer fish who inflates when he is poked.



[link](#)



Magic Mirror

Glasgow Science Centre

This virtual mirror is designed to drive engagement within the Science Centre's 'My World of Work' space, allowing users to 'try on' outfits virtually. Each outfit is combined with sound effects and animation to create an immersive, interactive environment.



[link](#)



Interactive Storybook

Southern General Hospital

Using infrared and motion-tracking, 2 users are cropped from live video footage and inserted into 6 animated, fun story chapter worlds, where they meet all manner of interesting items and creatures, with a full array of engaging sound effects.



[link](#)

Touch Screen Examples



iPad App

Skills Development Scotland

This iPad app features a sequence of brain profiling minigames and tasks. The user completes these in order to be informed of some of their key strengths and suitable careers are suggested, along with video insights from people in related industries.



[link](#)



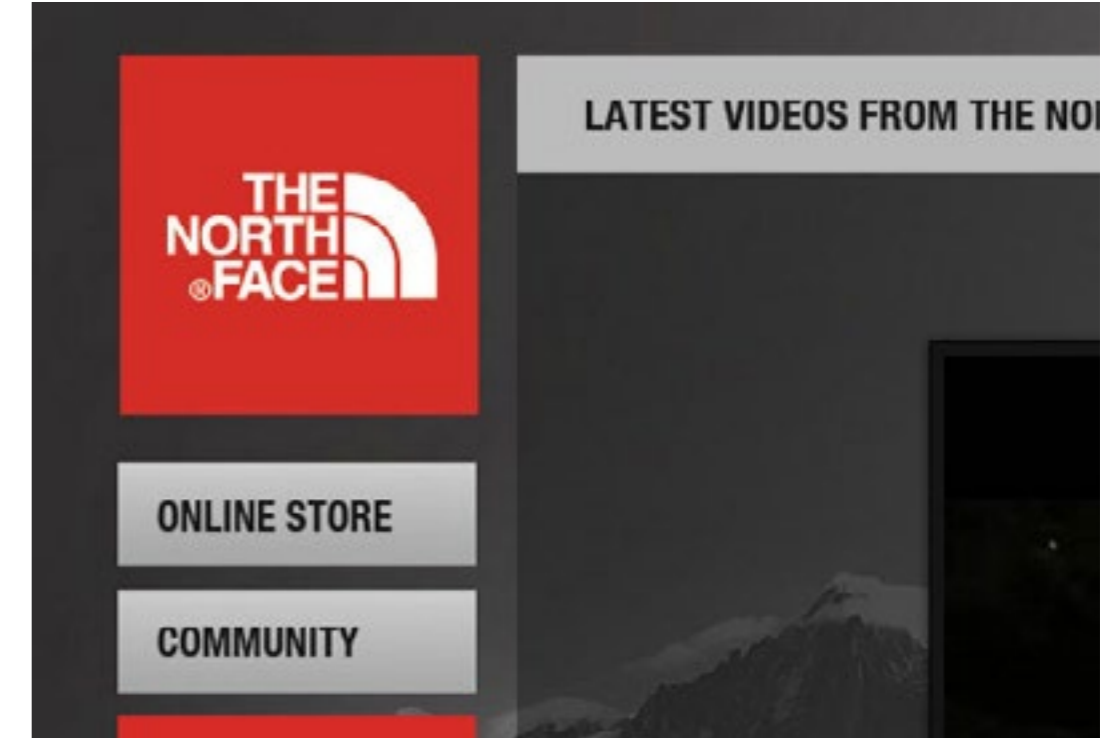
Touch Infowall

Glasgow Science Centre

This touchscreen application presents a freeform, icon-based careers explorer to younger visitors to the My World of Work hub in Glasgow Science Centre. Users interact with colour-coded icons that open to reveal information about STEM industries, including jobs and videos about any particular industry.



[link](#)



In-Store Kiosk

The North face

This kiosk software showcases many elements of the North Face brand, including their online store, a video collection, expedition pages, and a custom Facebook and Twitter social feed integration. Visitors have the ability to Tweet directly from the kiosk, with the kiosk having its own Twitter account.



[link](#)

projects...

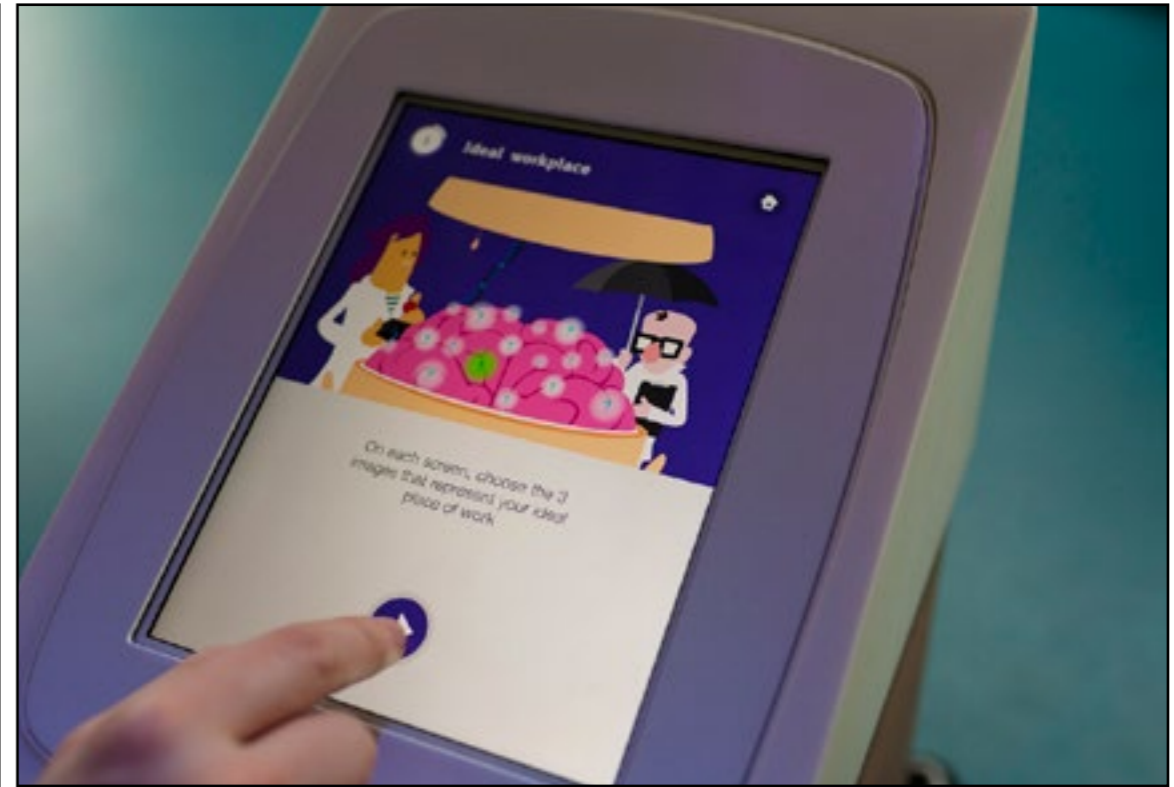
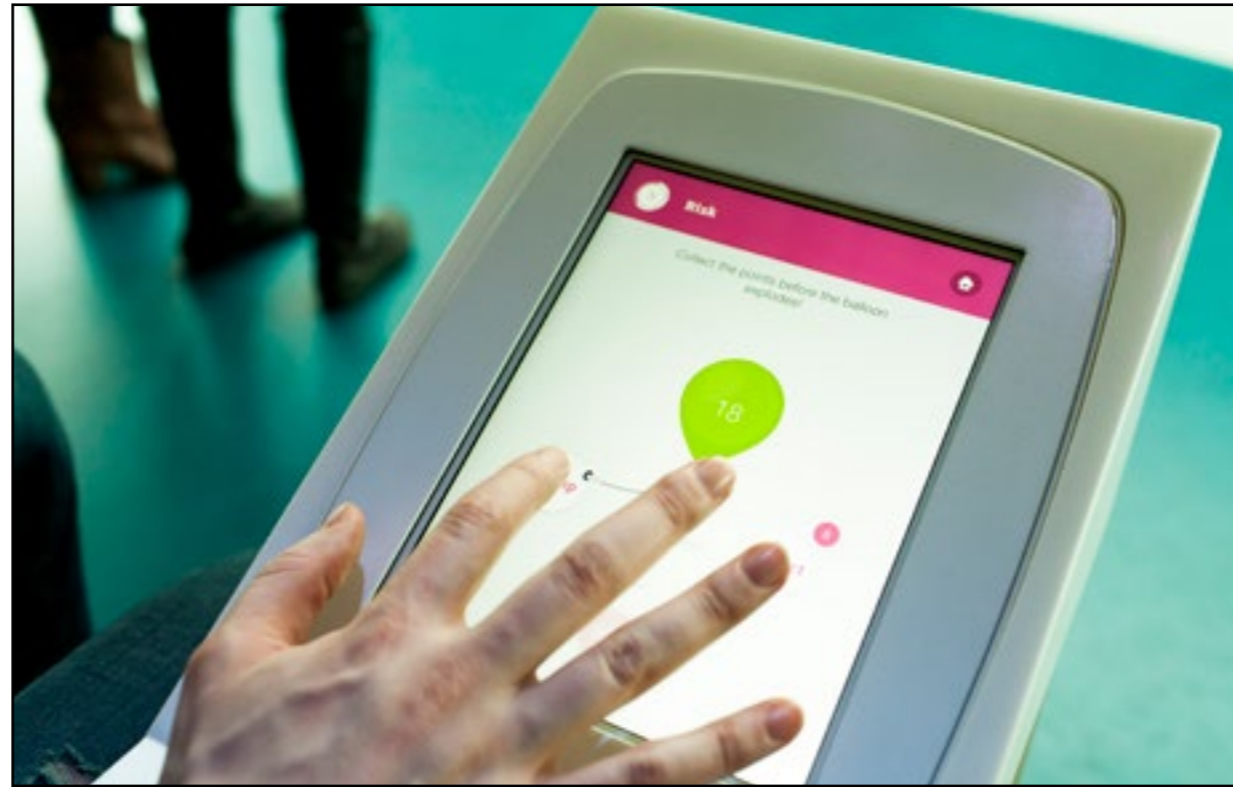
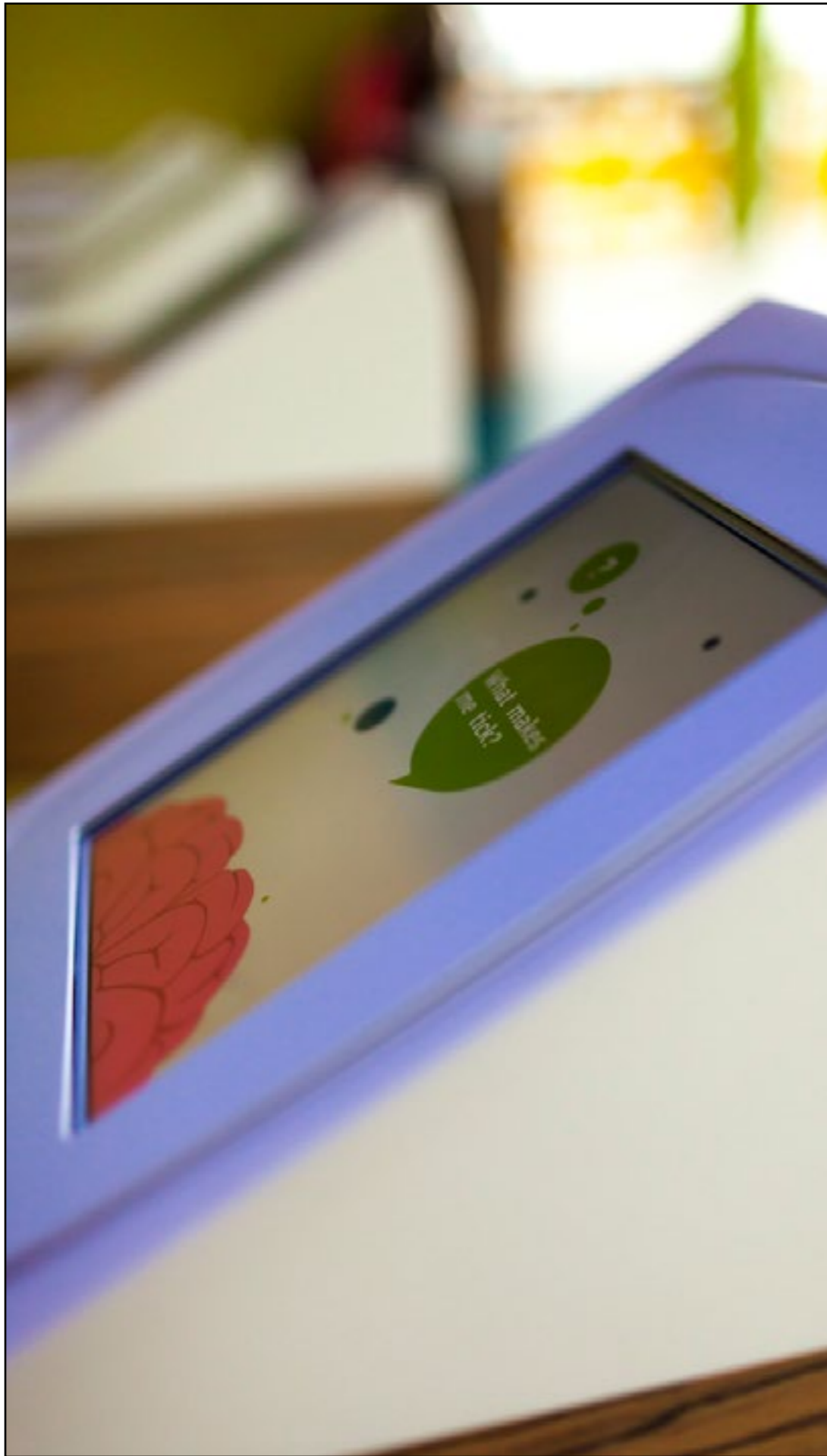
Glasgow Science Centre

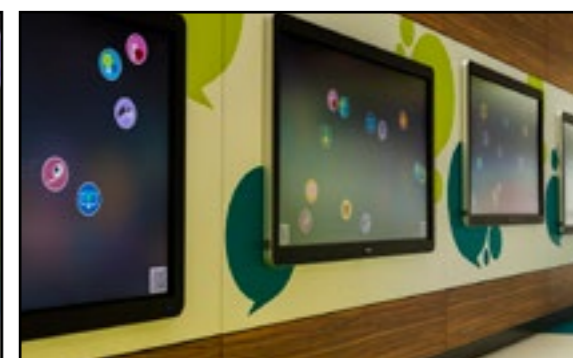
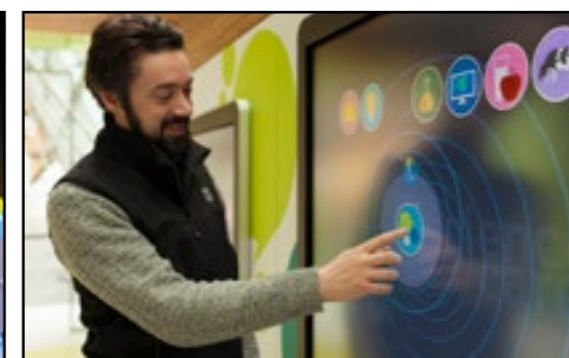
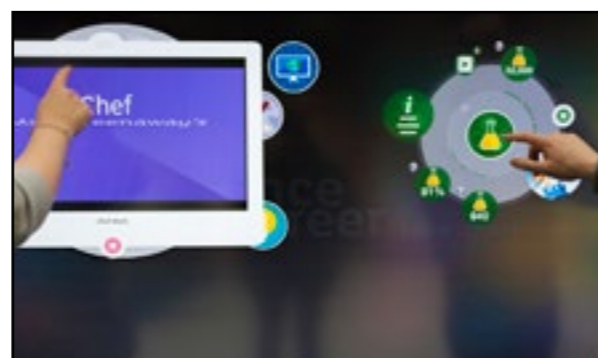
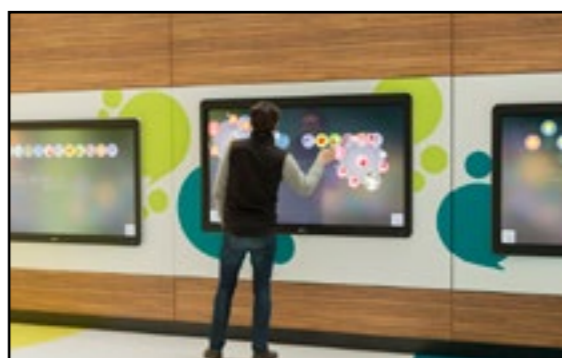
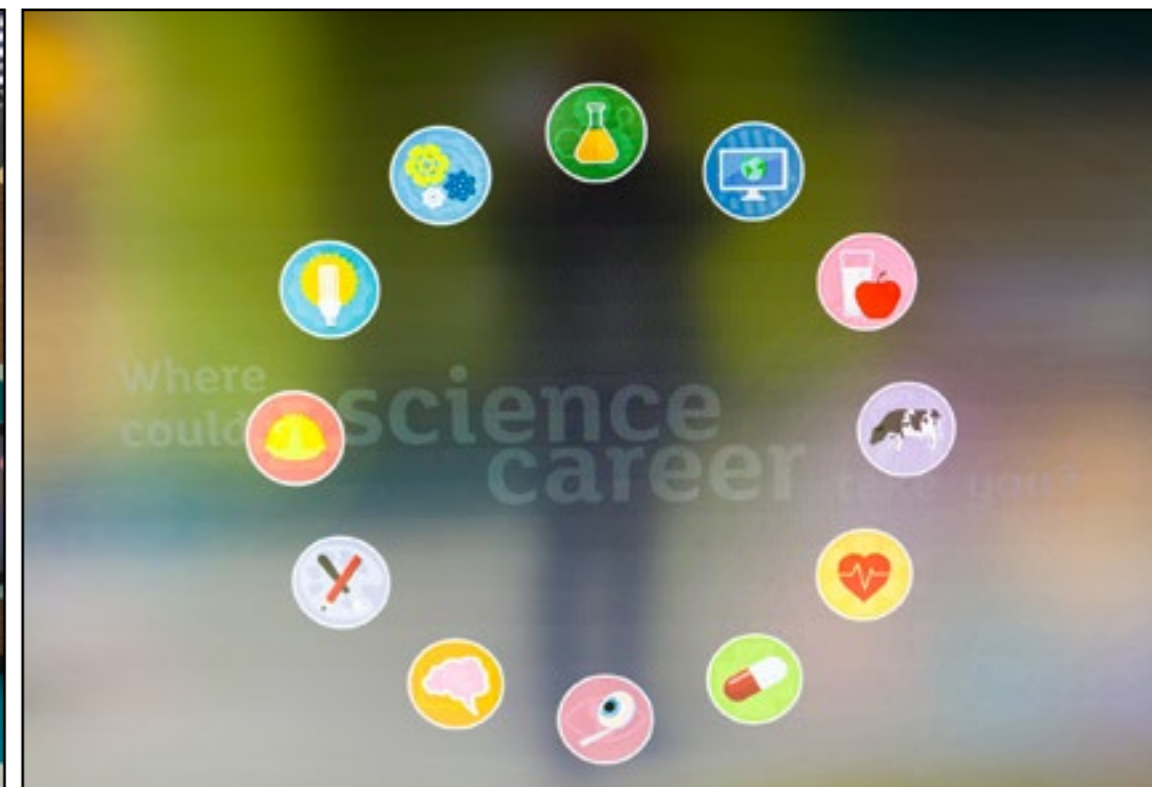
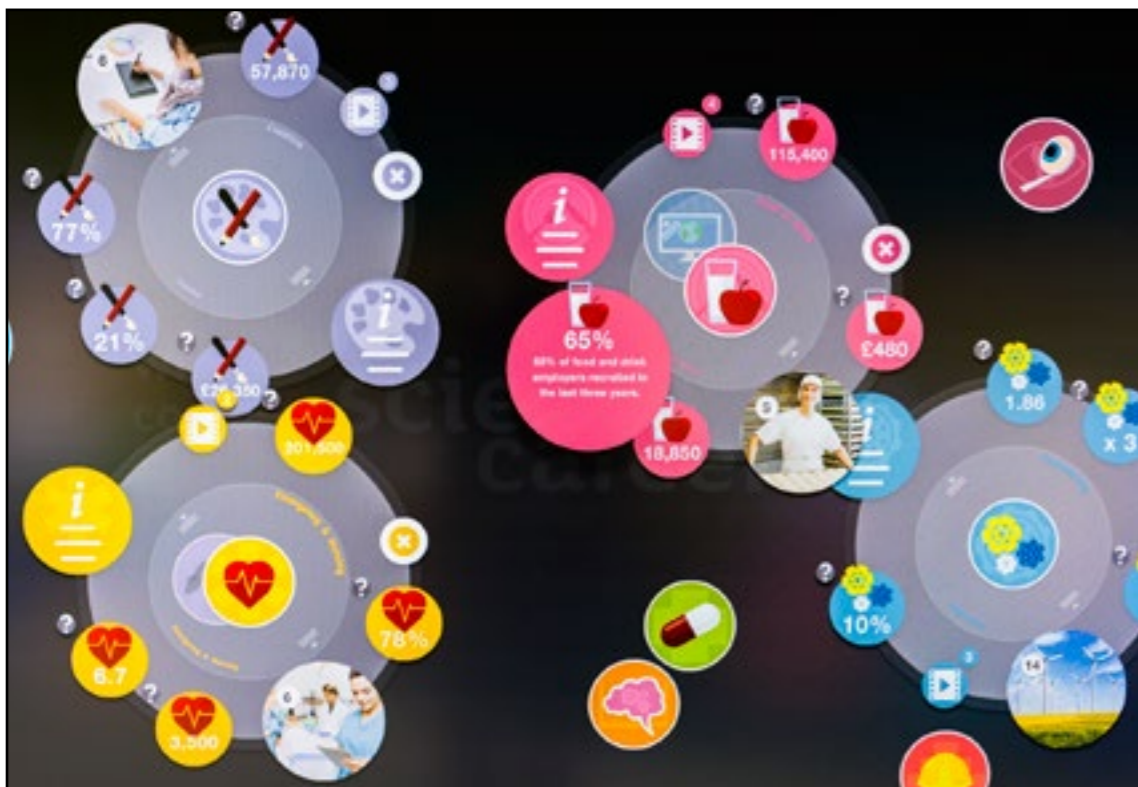
My World of Work Exhibition

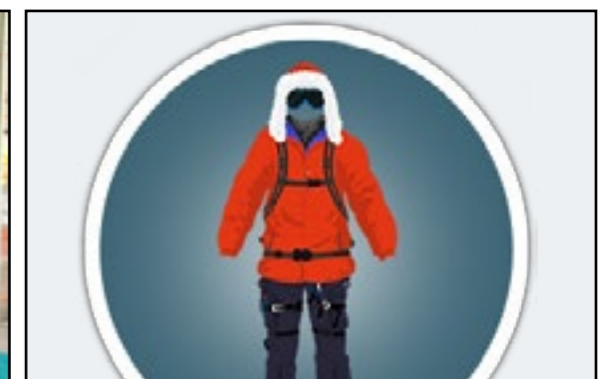
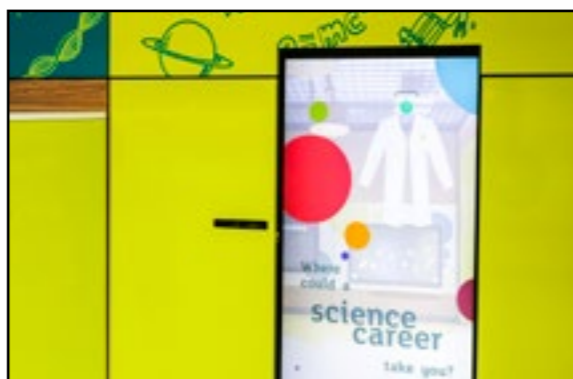
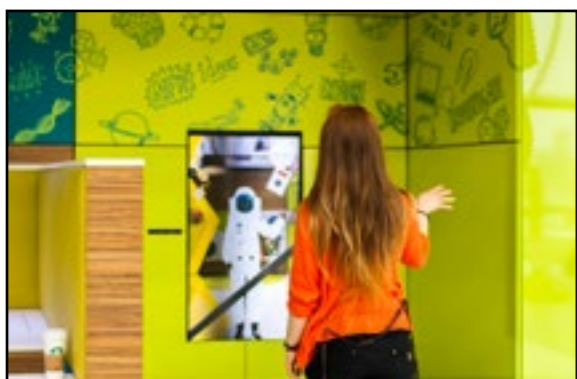
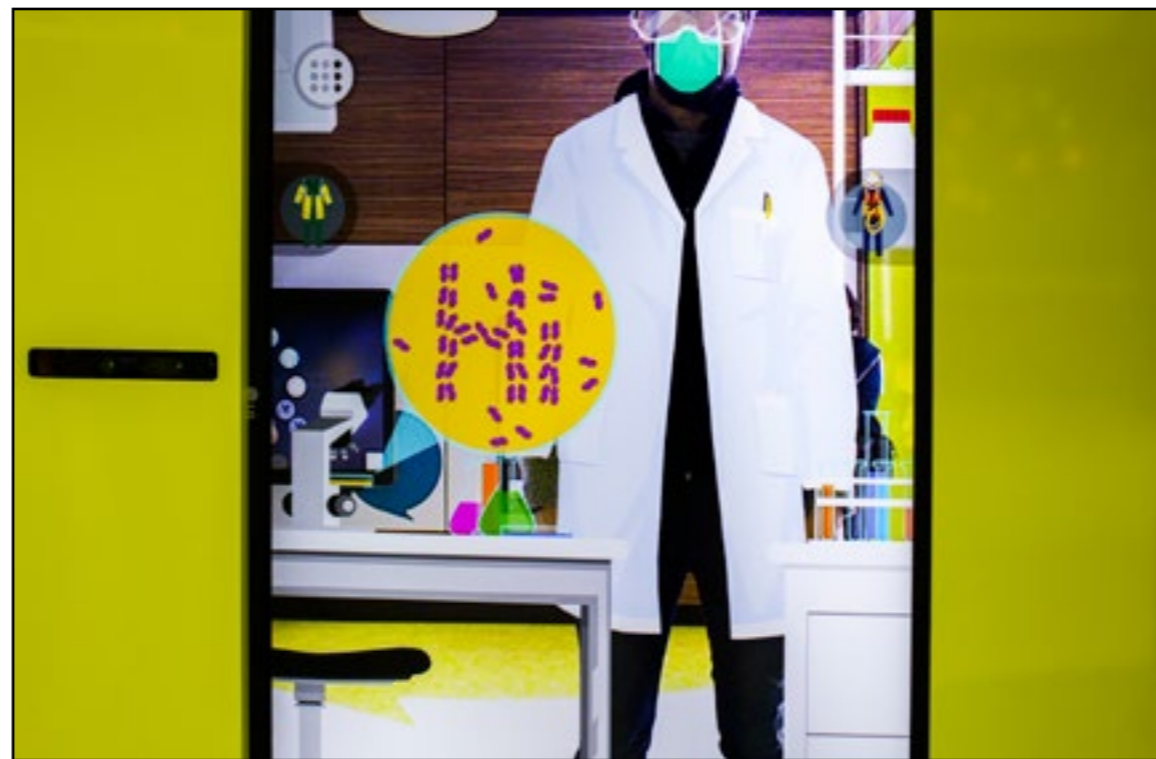
Launched in April 2014. Three interactives were created:

- iPad app
- Careers Touch Infowall
- Magic Mirror





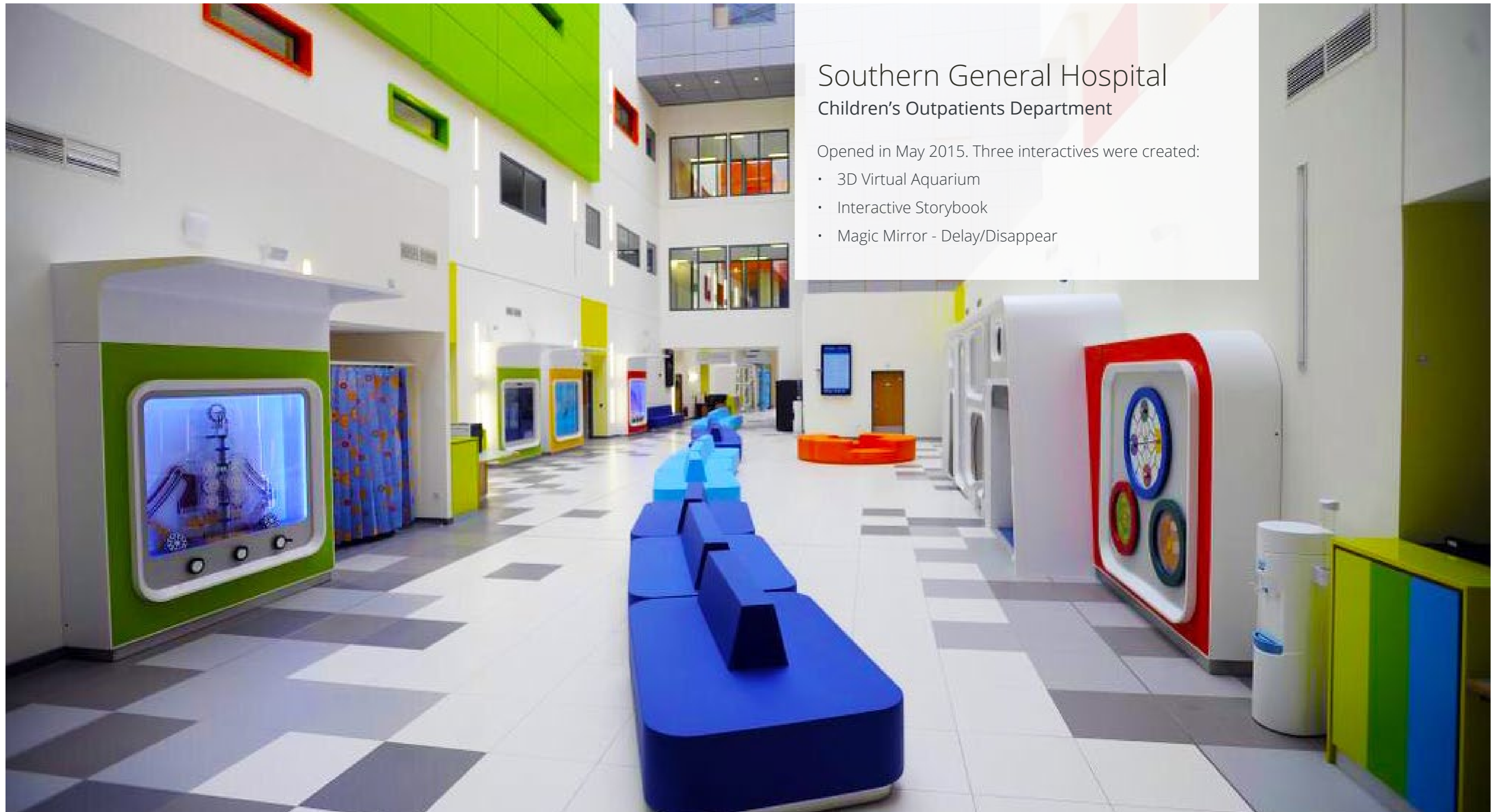




Southern General Hospital Children's Outpatients Department

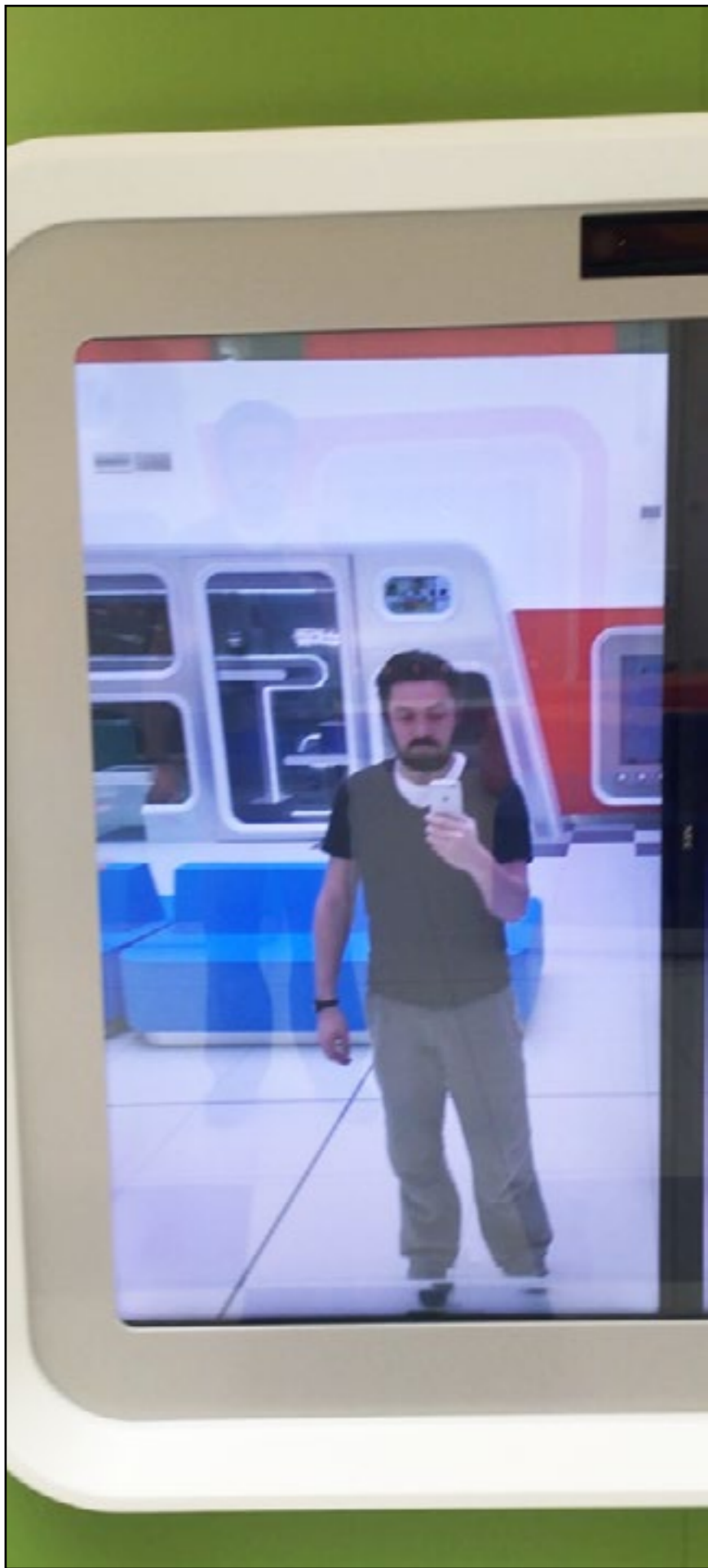
Opened in May 2015. Three interactives were created:

- 3D Virtual Aquarium
- Interactive Storybook
- Magic Mirror - Delay/Disappear









NATIONAL GRID LIVE POWER OUTPUT DISPLAY

Explore live power data
further information about the
UK National Grid with
this interactive map.

CURRENT
UK DEMAND

-1 MW

UK GRID
FREQUENCY

50.2

UK ENERGY GENERATION MIX



NORTH
ATLANTIC
OCEAN

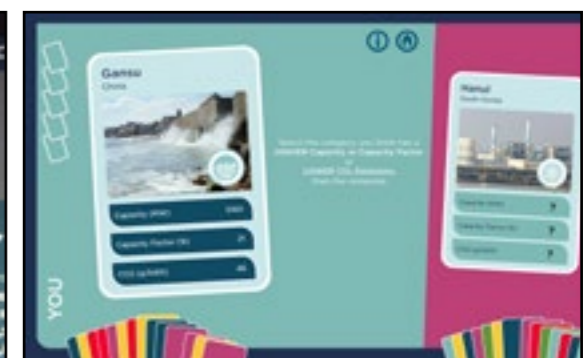
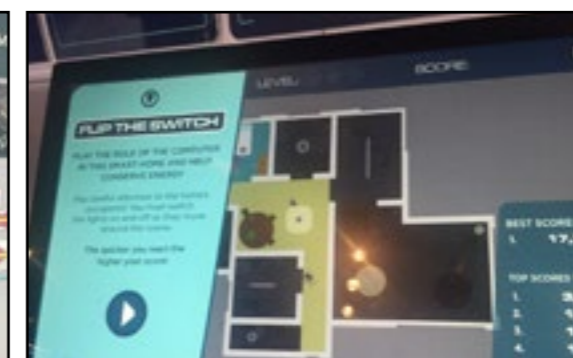
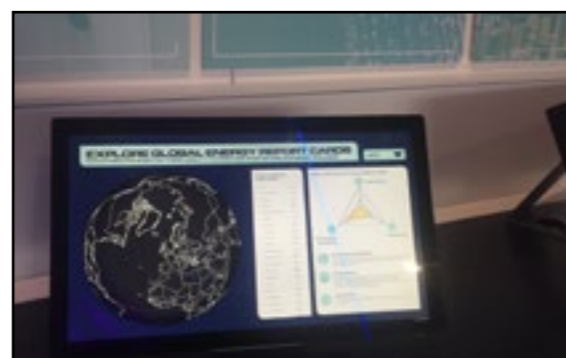
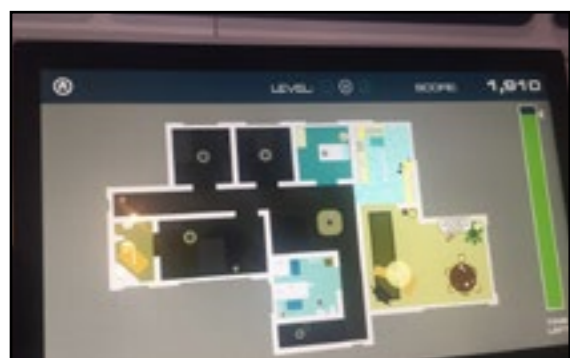
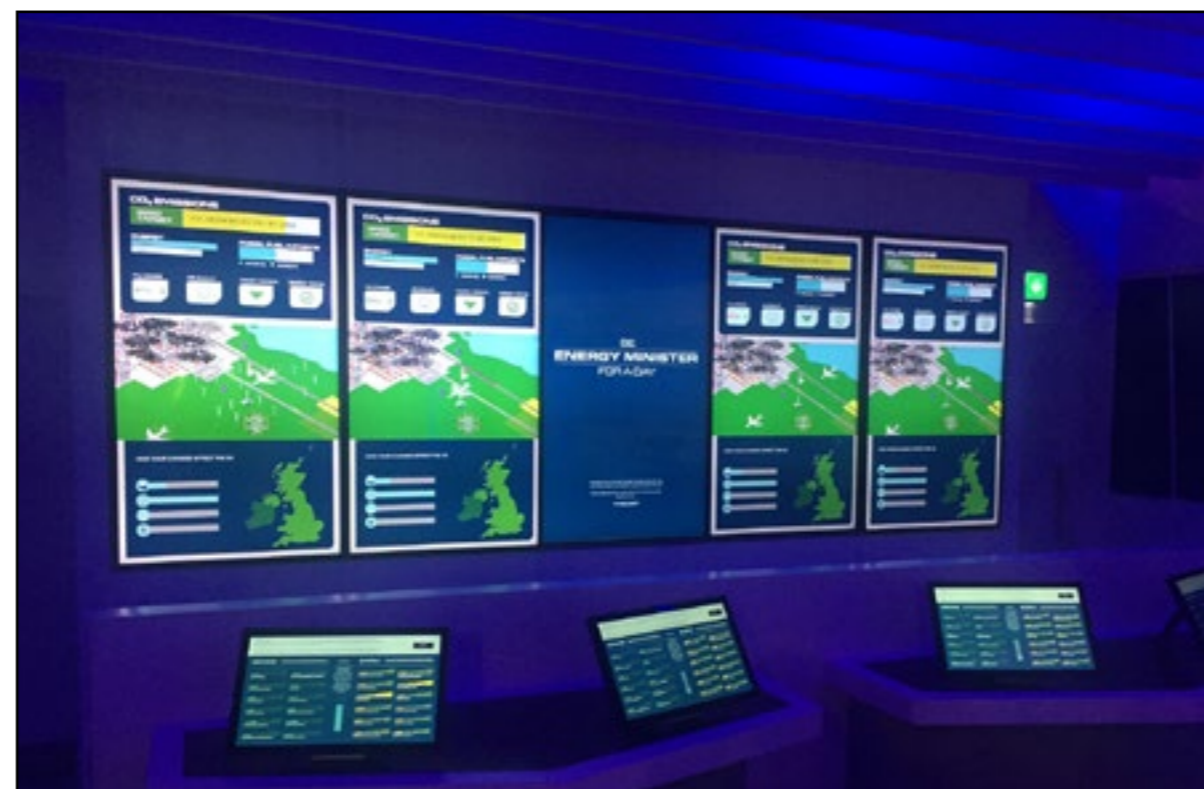
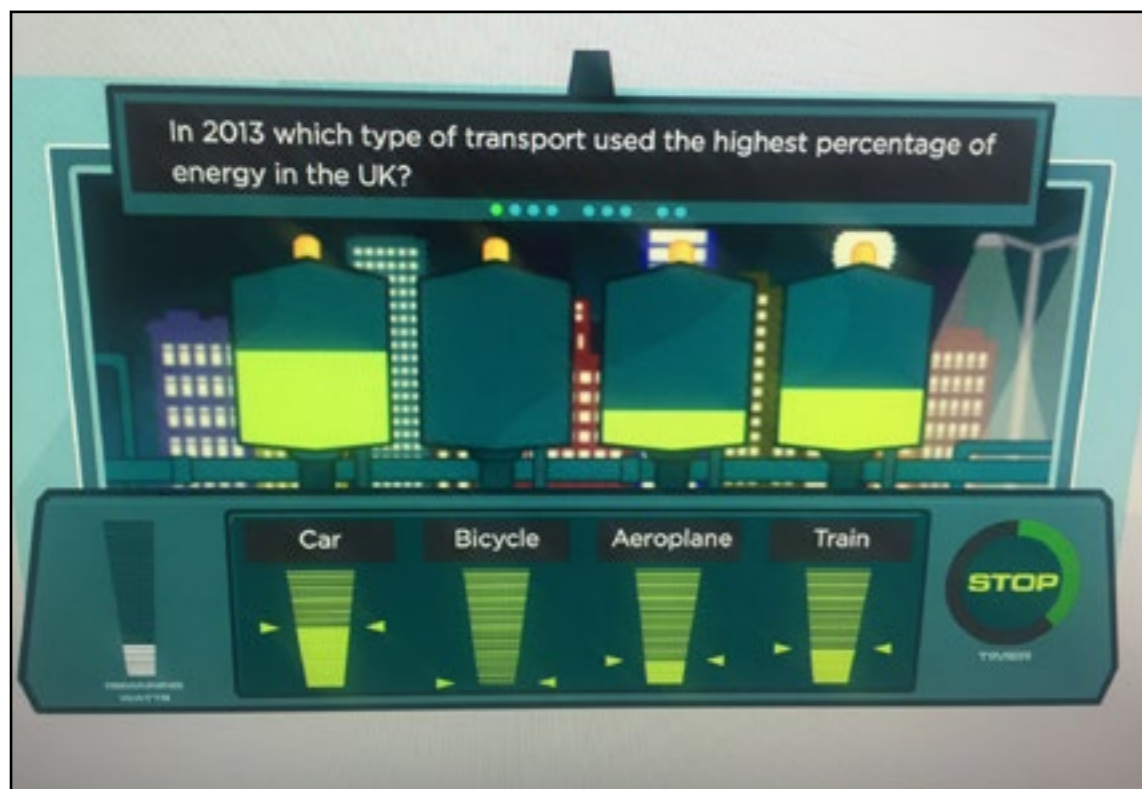
NORTH
SEA



Powering The Future Glasgow Science Centre

Opened in December 2016. 14 interactives, including:

- My Decc 2050 - climate change simulator
- Various energy-based games
- Explorative/learning energy interactives





User Friendly & Intuitive

Increase engagement & Retention of your message



Award Winning


Best Use of Technology - UK Career Development Awards 2014




Experience & Creativity

Experience & skill in producing for real world high-footfall areas




 BoundaryIO, The Distillery, The Whisky Bond
2 Dawson Road, Glasgow, G4 9SS

 0333 344 3840

 enquiries@boundary.io

 www.boundary.io

 Company SC478042 in Scotland | VAT 196 9920 42